



REPLACEMENT PART DESCRIPTION FORM

MODEL #: D442-32

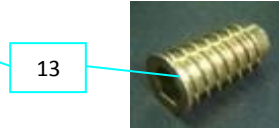
| PART# | DESCRIPTION | USED ON: | MRP# | | MATERIAL | QTY. | FACTORY USE ONLY!! | |
|-------|--|----------|--------|--|--|------|--------------------|-----|
| | | | | | | | PACK | P/M |
| 1 | Leg | D442-32 | R18179 | | Wood | 4 | B | M |
| 2 | Leaf Apron Hinge(w/#6x16mm Screws) | D442-32 | R04151 | | Metal | 4 | G | P |
| 3 | Butterfly Leaf Hinge(w/#6x16mm Screws) | D442-32 | R04152 | | Metal | 2 | G | P |
| 4 | Leaf Pin (M+F) | D442-32 | R04153 | | Metal | 8 | G | P |
| 5 | Lock (M+F)(w/#6x16mm Screws) | D442-32 | 86670 | | Metal | 4 | G | P |
| 6 | Leaf Swivel Hinge(w/#6x16mm Screws) | D442-32 | R04155 | | Metal | 2 | G | P |
| 7 | Leaf Bracket (22mm x 851mm) | D442-32 | R15032 | | Wood | 2 | G | M |
| 8 | Leaf Support | D442-32 | R29746 | | Wood | 1 | G | P |
| 9 | Applique | D442-32 | R18180 | | Wood | 4 | G | M |
| 10 | Slide | D442-32 | R04162 | | Wood | 2 | B | P |
| 11 | Ball Catch Block | D442-32 | R04163 | | Wood | 1 | G | M |
| 12 | Ball Catch (M+F) | D442-32 | R18181 | | Metal | 1 | G | P |
| 13 | Leg Insert (5/16 x 25mm) | D442-32 | R39698 | | Metal | 8 | G | P |
| 14 | Hardware Pack | D442-32 | R39699 | | 5/16 x 70mm Allen Bolt (8) 5/16 Flat Washer (8) 5/16 Lock Washer (8) Allen Wrench (1) | 1 | G | P |

REPLACEMENT PART DESCRIPTION FORM

MODEL #: D442-32



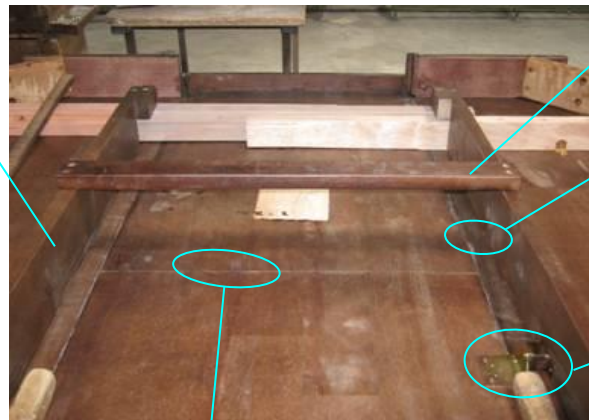
2



13



12



7

8

10



9



4



6



5



3