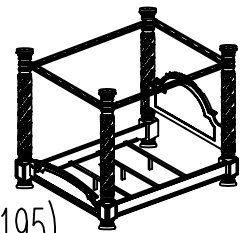


MILLENNIUM®

THE WORLD CLASS FURNITURE COMPANY®



ASSEMBLY INSTRUCTION SHEET FOR B553-162(for B553-172/150/151/199/195)

IMPORTANT SAFETY NOTICE: READ CAREFULLY BEFORE BEGINNING ASSEMBLY!

- * Always use proper tools.
- * Follow the assembly steps in order. Do not skip any steps.
- * Carefully review the list of parts. If parts are missing, contact the retailer from which you purchased the product to obtain any missing parts. DO NOT USE SUBSTITUTE PARTS.
- * Periodically check to ensure that all connectors (bolts, screws, etc.) are tight.
- * Keep the instructions for future reference.



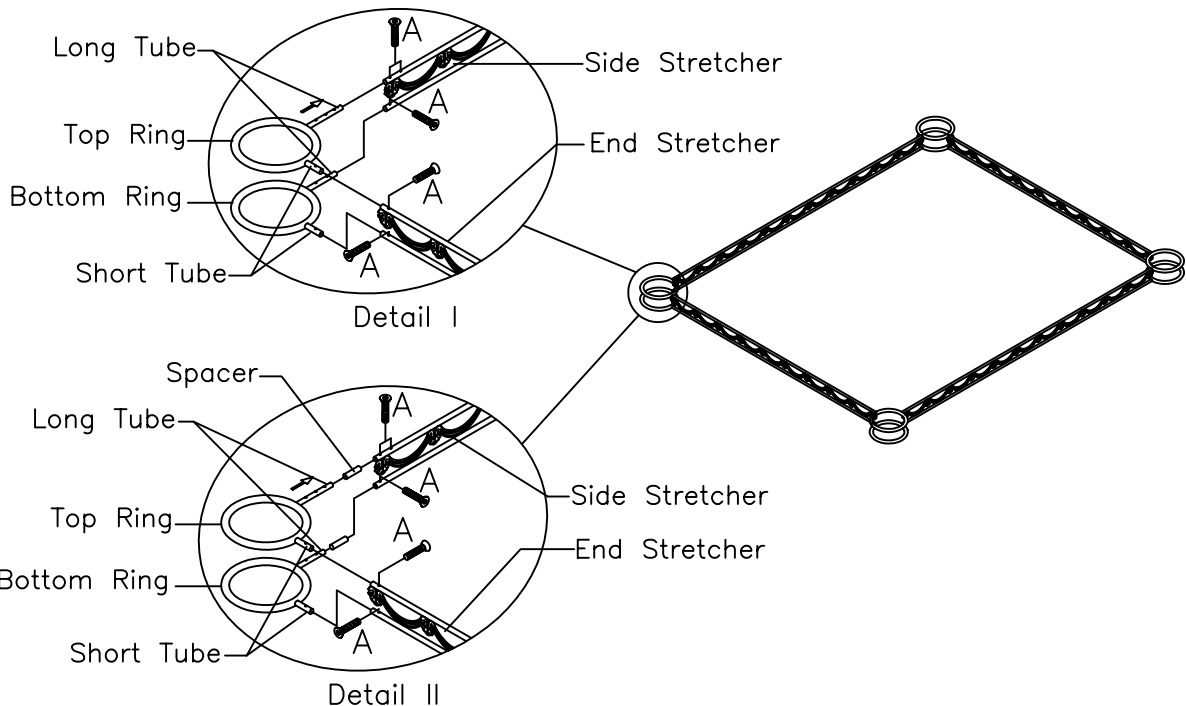
NOTE: ASHLEY FURNITURE INDUSTRIES, INC. DISCLAIMS ANY LIABILITY FOR DAMAGES OR INJURIES WHICH MAY OCCUR DUE TO FAILURE TO PROPERLY FOLLOW ASSEMBLY INSTRUCTIONS, PROPERLY ASSEMBLE THE PRODUCT, OR PROPERLY USE THE PRODUCT.

CHECK TO SEE THAT THE FOLLOWING PARTS ARE IN THE HARDWARE PACK!

NO	DRAWING	Q'TY	DESCRIPTION	NO	DRAWING	Q'TY	DESCRIPTION
A		20	1/4"x 13mm Tapered Allen Bolt	B		1	4mm Allen Wrench



NOTE: UNIT SHOULD BE ASSEMBLED BY 2 OR MORE PEOPLE!
DO NOT TIGHTEN ANY BOLTS UNTIL ALL BOLTS HAVE BEEN STARTED!

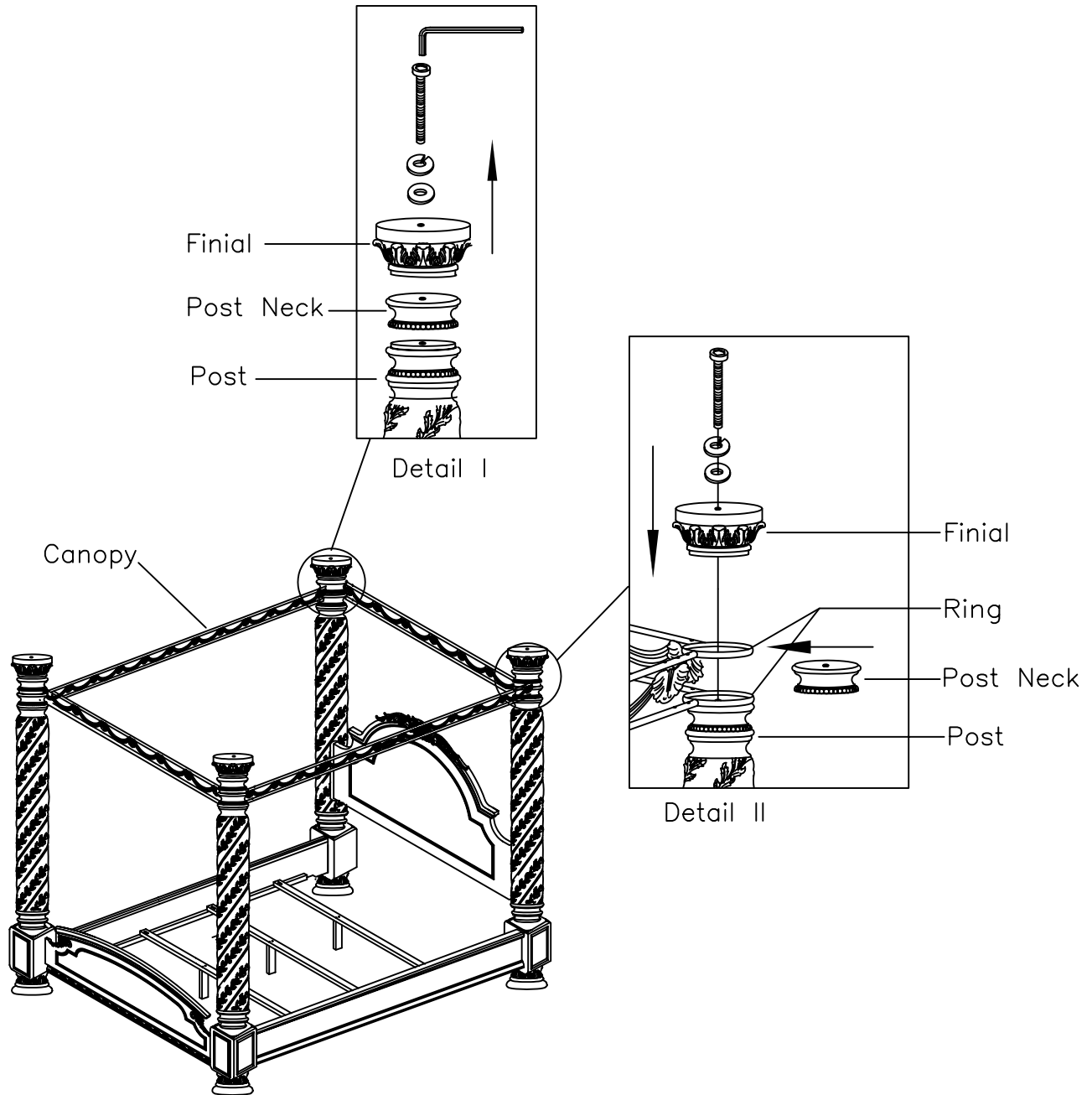


FOR KING SIZE BED(-99):

1. Insert a bottom ring (2 holes in the long tube) and a top ring (3 holes in the long tube) into a side stretcher and an end stretcher (shown in detail I) so that the holes in each ring match the holes in each stretcher.
2. Fix the rings in place by turning a tapered Allen bolt A into each hole as shown in detail I.

FOR CAL KING SIZE BED(-95):

1. Insert a spacer onto each long tube of each ring. Next insert a bottom ring and a top ring into a side stretcher and an end stretcher (shown in detail II), so that the holes in each ring match the holes in each stretcher.
2. Fix the rings in place by turning a tapered Allen bolt A into each hole as shown in detail II.
3. Repeat for the remaining rings.
4. Tighten all bolts.



1. Remove the finials and the post necks from the posts by first removing each Allen bolt, lock washer and flat washer from the finial top as shown in detail I.
2. Carefully set the canopy frame onto each post.
3. Carefully insert a post neck inside the two rings in each corner. Next position a finial onto each post neck so that the hole in both the finial and post neck are aligned with the hole in the post (shown in detail II).
4. Fix the canopy in place by turning an Allen bolt, lock washer and flat washer back into each hole as shown in detail II.