

Bed Frame Assembly

USE WITH B100-21, B100-31, B100-66

INCLUDED PARTS

FOR ALL MODELS

Side Rail Assembly with Cross Arms
2 pcs

End Caps
2 pcs

FOR B100-21

Spin Glides with Plastic Sockets
4 pcs

FOR B100-31

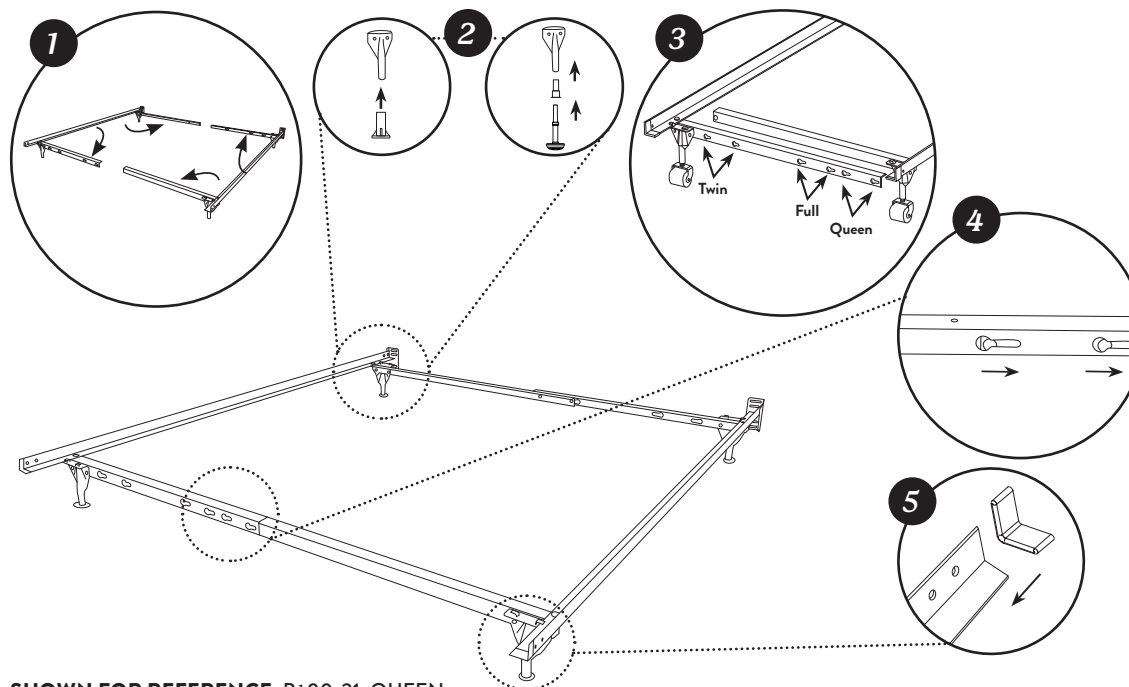
Center Rail (not used for Twin)
1 pcs

Screws

Nuts

Plastic Glides
1 pcs

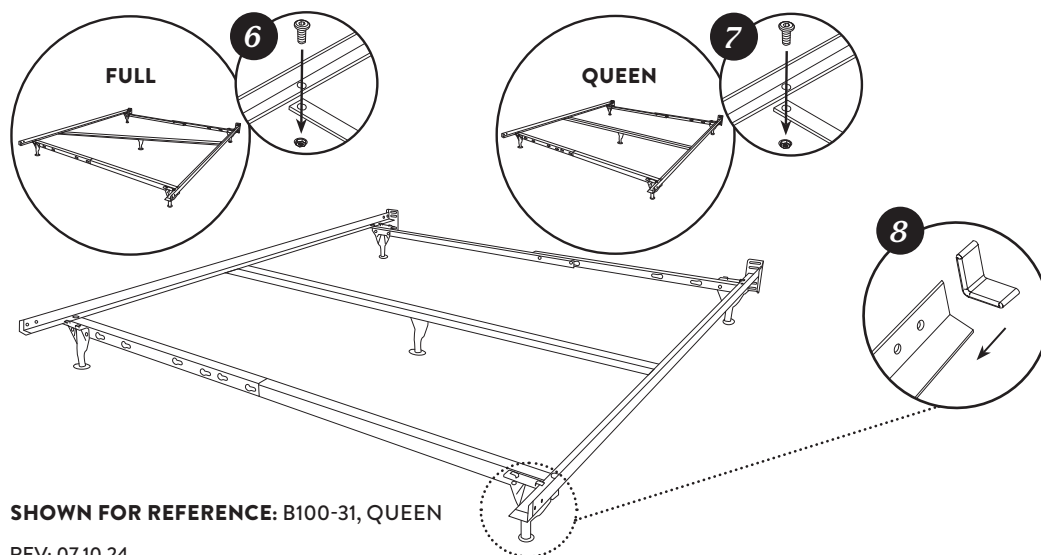
Spin Glides with Plastic Sockets
4 pcs



SHOWN FOR REFERENCE: B100-21, QUEEN

B100-21, B100-31, B100-66:

1. Set side rail assemblies out with headboard brackets at the same end. Swing out cross arms from the side rails to a 90° angle.
2. Depending on the model purchased, install glides **AND / OR** spin glides with plastic sockets onto the legs.
3. **B100-21, B100-31:** Locate the keyholes on the cross arms needed for your appropriate size bedding. Overlap the cross arms and insert rivets on cross arms into the keyholes selected.
4. Slide the cross arms away from each other to lock the position. Repeat steps 3 & 4 at the other end of the bed.
5. **B100-21 & TWIN B100-31:** Slip end caps over the foot ends of the side rails. Your frame is now ready to use.



SHOWN FOR REFERENCE: B100-31, QUEEN

B100-31 FULL & B100-31 QUEEN:

6. **B100-31 FULL:** Align the center rail's holes with the holes to the right of the middle of the side rail. Center rail should be diagonal. Secure with screws and nuts. Continue to Step 8.
7. **B100-31 QUEEN:** Align the center rail's holes with the middle of the side rails. Secure with screws and nuts. Continue to Step 8.
8. Slip end caps over the foot ends of the side rails. Your bed frame is now ready to use.

FOR B100-66 CONTINUE TO NEXT PAGE →

Bed Frame Assembly

USE WITH B100-21, B100-31, B100-66

INCLUDED PARTS

FOR B100-66

Extender Rails
2 pcs

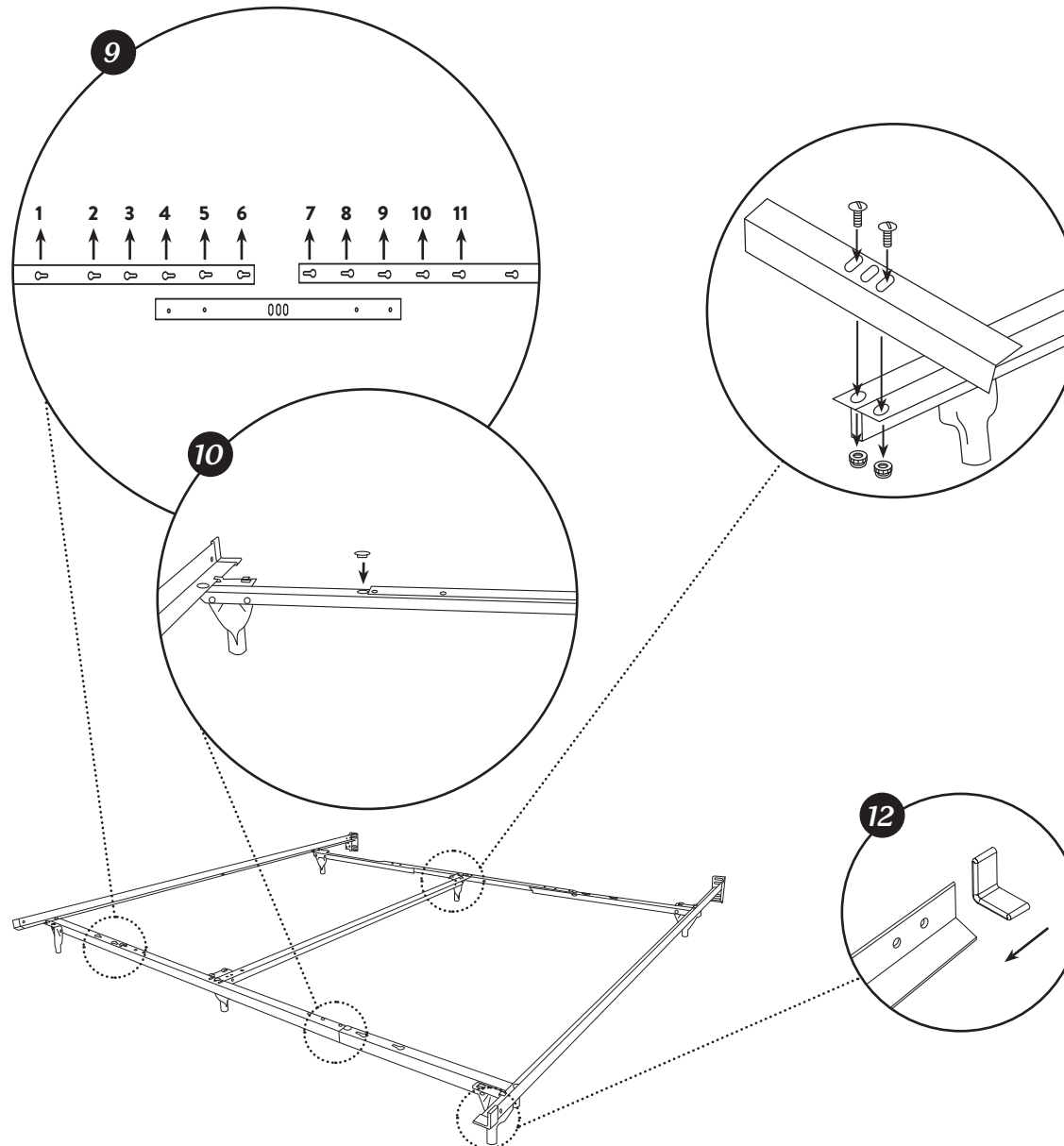
Center Rail
1 pcs

Screws

Nuts

Plastic Glides
2 pcs

Spin Glides with Plastic Socket
4 pcs



B100-66:

9. Locate the keyholes on the cross arms needed for your appropriate size bedding.

QUEEN: Keyhole 1, 2, 11, 12

CAL-KING: Keyhole 3, 5, 8, 10

KING: Keyhole 4, 6, 7, 9

10. Insert rivets on extender rail into selected keyholes. Slide arms away from each other to lock the position. Then insert plug lock into keyhole at the end of the overlap. Repeat on the other end of the frame.
11. Attach each end of center rail to the extender rails using screws and nuts.
- CENTER RAIL INSTALL:** Insert a screw through the holes at the end of the center rail and the end holes in the extender rail. Center rail should run head to foot. Secure with nut. Repeat on the other end.
12. Slip the end caps over the foot ends of the side rails. Your bed frame is now ready to use.

SHOWN FOR REFERENCE: B100-66, QUEEN

REV: 07.10.24