

LEG ASSEMBLY INSTRUCTION SHEET

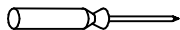
ALLOW 10 MINUTES FOR ASSEMBLY

1

1. Make sure you have the following parts:

(4)
Legs

(2)
2.75" Gimlets



A PHILLIPS HEAD
SCREWDRIVER IS
NEEDED FOR ASSEMBLY



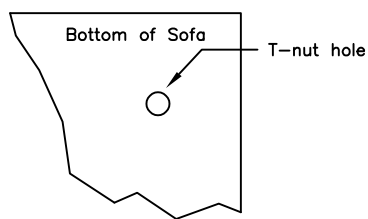
(2) Front Legs

(2) Back Legs



2

1. Working on a clean surface, turn the unit on its back with the sofa base facing your work area.
2. Locate T-nut hole in frame and insert leg into hole.

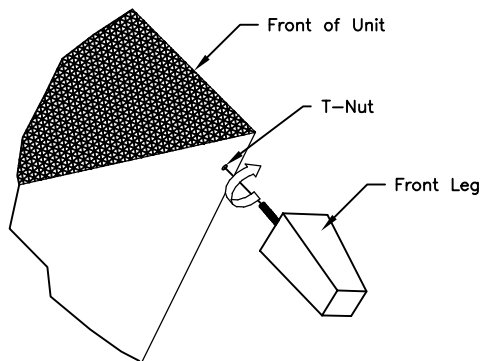


3

1. After inserting the leg into the t-nut, turn leg clock-wise until leg fits tight on bottom surface.
2. Secure back legs using (1) - 2.75" screw per leg in hole provided.
2. Repeat this procedures for the remaining legs.
3. Turn unit upright and place in the desired location.



(2) Front Legs



(2) Back Legs

